

# ELEMENTAL

An Exhibition of Environmentally Themed Art  
by Stephen Tromans KC



39 Essex Chambers, 81 Chancery Lane, London WC2A 1DD  
20 November to 20 December 2023

The Exhibition is sponsored by leading environmental information and data provider Groundsure



All profits from sale of artwork are donated to the Environmental Law Foundation



**This Catalogue accompanies an exhibition of artworks with an environmental theme created by Stephen Tromans KC.**

**Copies of this reprinted catalogue may be purchased in return for a donation to the Environmental Law Foundation (ELF) via a JustGiving page created by 39 Essex Chambers. Details of how to do this are on the back cover.**

**Some of the works are available for purchase as originals: the price is indicated where this is the case. Some are also available to purchase as high quality prints on art paper or canvas. Details are given on the inside back cover.**

**Huge thanks are due to Groundsure for generously sponsoring the overheads of this exhibition in order to make it possible.**

**Finally thanks are also due to the Marketing Department at 39 Essex Chambers for their efficient support, and to Chambers generally for hosting the event.**

**Stephen Tromans KC  
November 2023**

## **Work for sale**

**Some works are for sale as originals. These are indicated in the catalogue with the price.**

**All works are available as prints on high quality art paper or on canvas. Prices are:**

**Full size paper print: £350 (includes £50 for printing and postage)**

**Full size print on canvas: £500 (includes £100 for printing and postage)**

**These prices include printing and postage to your chosen address in the UK. The cost of printing and postage is payable separately, and the balance is payable by making a donation to the JustGiving page at the website address on the back cover, or scan the code on the back cover.**

**Please note that Gift Aid cannot be claimed on the donation**

**If you wish to purchase either an original work or a print,  
please contact Stephen Tromans KC at  
[stephen.tromans@39essex.com](mailto:stephen.tromans@39essex.com)**



**PLEASE MAKE A DONATION FOR THIS CATALOGUE TO  
THE ENVIRONMENTAL LAW FOUNDATION AT**

**[www.justgiving.com/crowdfunding/STKC-Elemental](http://www.justgiving.com/crowdfunding/STKC-Elemental)**

**OR SCAN THIS CODE**



**THE SUGGESTED DONATION IS £20.  
GIFT AID CANNOT BE CLAIMED**

## **PREFACE: TWO INTERESTS IN ONE EXHIBITION**

For the last ten years, two key themes in my life have been environmental law and painting. Environmental law has been my consuming interest for almost 40 years, art much more recently. Most recently the two have increasingly competed for my time and attention, so it is a great source of pleasure to bring the two together in this exhibition, *Elemental*, which are of paintings influenced by or commenting on the state of our environment and its component elements, celebrating the good things and lamenting the not so good.

I have in one way or another been producing environmental paintings for the last few years. Some are quite pointed, others simply try to convey the essence of the parts of the environment I most enjoy: small streams, great mountains, diving seabirds.

I believe that both nature and art have the capacity to transcend the pressures and seductions of modern life and to take us to a better, more spiritual, place. This seems to be needed now more than ever, as the world struggles with so many competing voices, and as politicians seem bent on pandering to the lowest common denominator to win votes, rather than offering real vision and leadership.

I am pleased to acknowledge three organisations in the context of this exhibition.

The first is Groundsure, provider of environmental information services, who have extremely generously sponsored the overheads of putting on this exhibition.

Secondly, I wish to commend the work of the Environmental Law Foundation (ELF) who I have known since its foundation, together with its extraordinary founders Martin Polden OBE and Diana Schumacher, and I have in the past been a trustee and chair. My colleague in Chambers Richard Wald KC is currently the chair of ELF, and all proceeds from the sale of paintings, prints and catalogues will go to the work of ELF in promoting environmental justice and public participation in environmental decision making. It is a source of sadness that Martin Polden died earlier this year, still as enthusiastic as ever for the work of ELF.

Thirdly, my thanks go to 39 Essex Chambers for hosting this exhibition and doing so much to assist in organising and publicising it.

**STEPHEN TROMANS KC**

November 2023

## GROUNDSURE

Groundsure is a leading UK environmental and climate data authority. It provides land and property professionals with expert information on risks including land contamination, flooding and ground stability, as well as forward guidance on potential climate risks, to enable them to advise their clients in transactions. Groundsure provides high value, property-specific opinions and analysis of land use, turning complex environment and climate data into clear and simple insights. This enables its clients to make better informed land and property decisions and as a result more positive outcomes for our climate-challenged society.

Groundsure is a Certified B Corporation – a group of companies that place customers, staff, community and the environment at the heart of its decision making. It is working collaboratively to help solve some of the world’s biggest problems, chief among them being resilience against climate change.

[www.groundsure.com](http://www.groundsure.com)



## THE ENVIRONMENTAL LAW FOUNDATION

The Environmental Law Foundation (ELF) was founded in 1992. Its objectives are to help socially and economically disadvantaged communities to secure participation and access to justice in environmental issues, and promoting the collective, good decision-making which lies at the very heart of civilized, democratic and stable societies. It does this by providing free information and guidance in-house on environmental issues for individuals and communities, through its university based experts.

<https://elflaw.org/>



## 39 ESSEX CHAMBERS

39 Essex Chambers is a large and long-established barristers' chambers based in London, with offices also in Singapore, Manchester and Kuala Lumpur. Its 193 barristers provide a broad range of legal services, including Administrative and Public Law, Alternative Dispute Resolution, Clinical Negligence and Personal Injury, Commercial and Construction, Energy and Natural Resources, Environment, Major Inquiries, Planning and Regulatory and Disciplinary law. See the website for further information and the legal information resources provided.

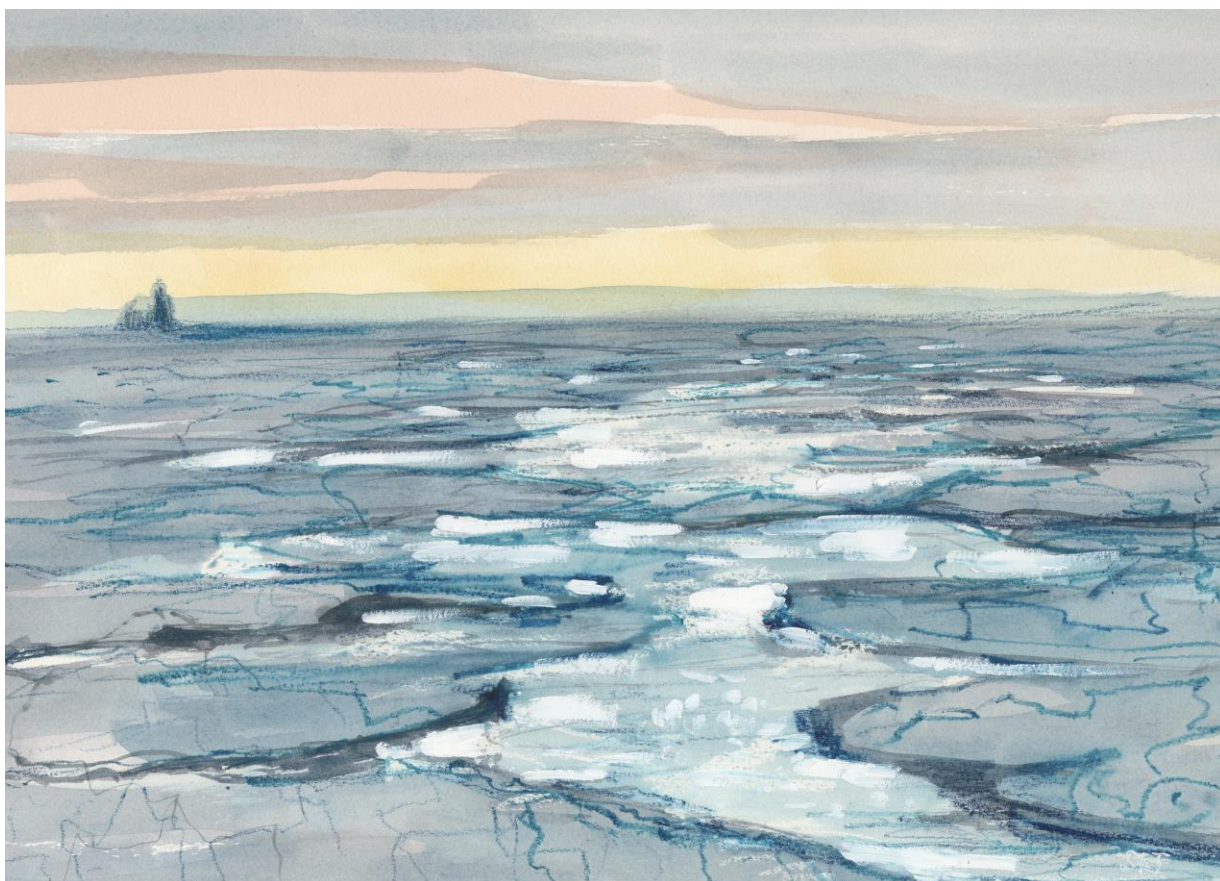
<https://www.39essex.com/>





## ELEMENTAL: POLAR REPROACH

I have always been fascinated by the polar regions. I have never visited them, and feel that to do so now would be environmentally irresponsible, but they are a source of awe and wonder. They are also the main bellwether of global warming as we see the inexorable loss of ice and glaciers on our TV screens and in our newspapers. These regions retain their implacable beauty but now also offer a silent reproach to the willful blindness of humanity in failing to do more to bring emissions of greenhouse gases under control. I have tried to convey this in a series of paintings in oils and mixed media.



*Cracking Ice*

Mixed media on paper, 25 x 35 cm, £1,400  
Prints also available – see inside back cover





*Glacier Face*

Mixed media on paper, 25 x 35 cm, £1,400  
Prints also available – see inside back cover



*Blue Ice Fragments*

Mixed media on paper, 25 x 35 cm, £1,400

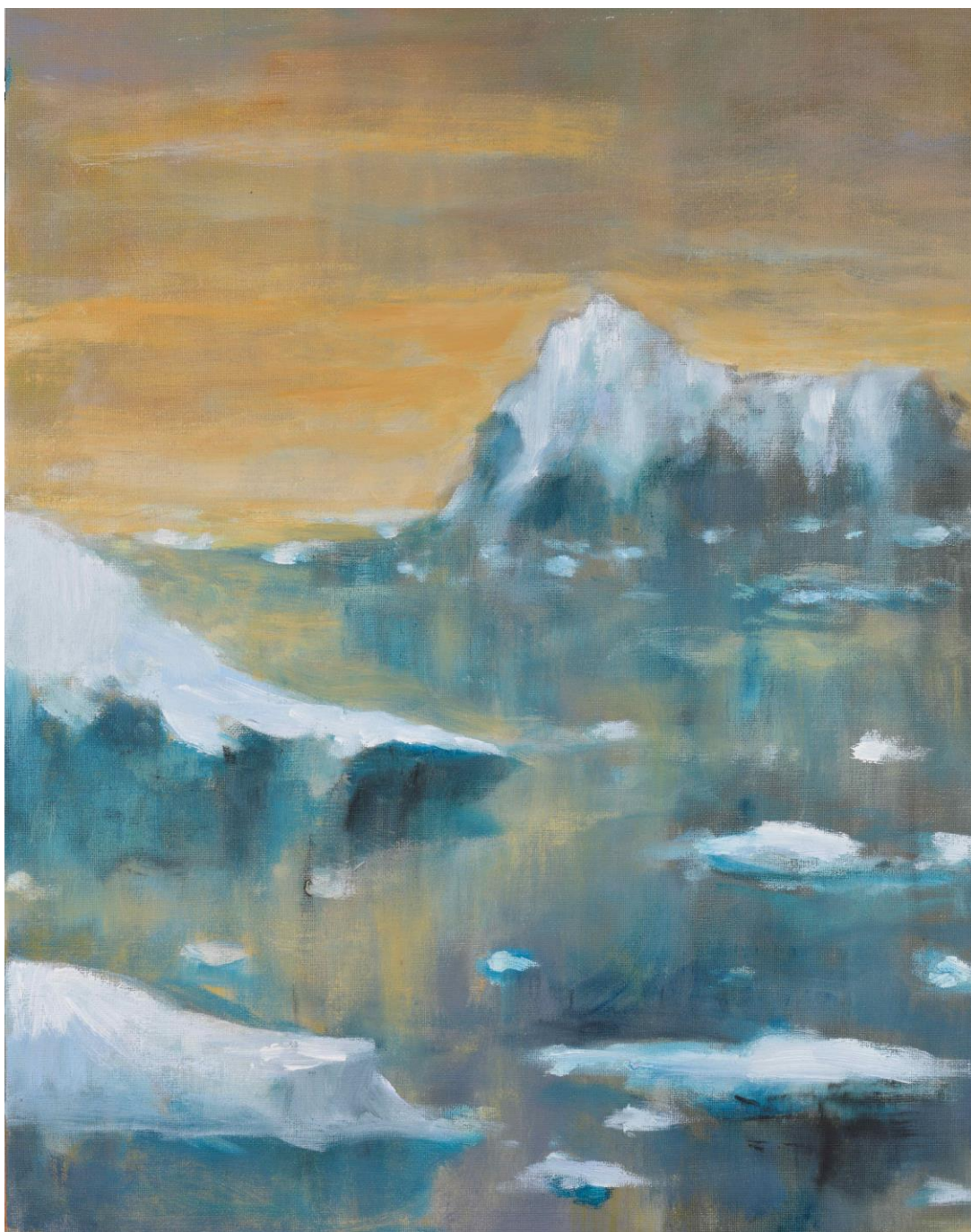
Prints also available – see inside back cover





*Blue Ice, Orange Sky*

Mixed media on paper, 25 x 35 cm, £1,400  
Prints also available – see inside back cover



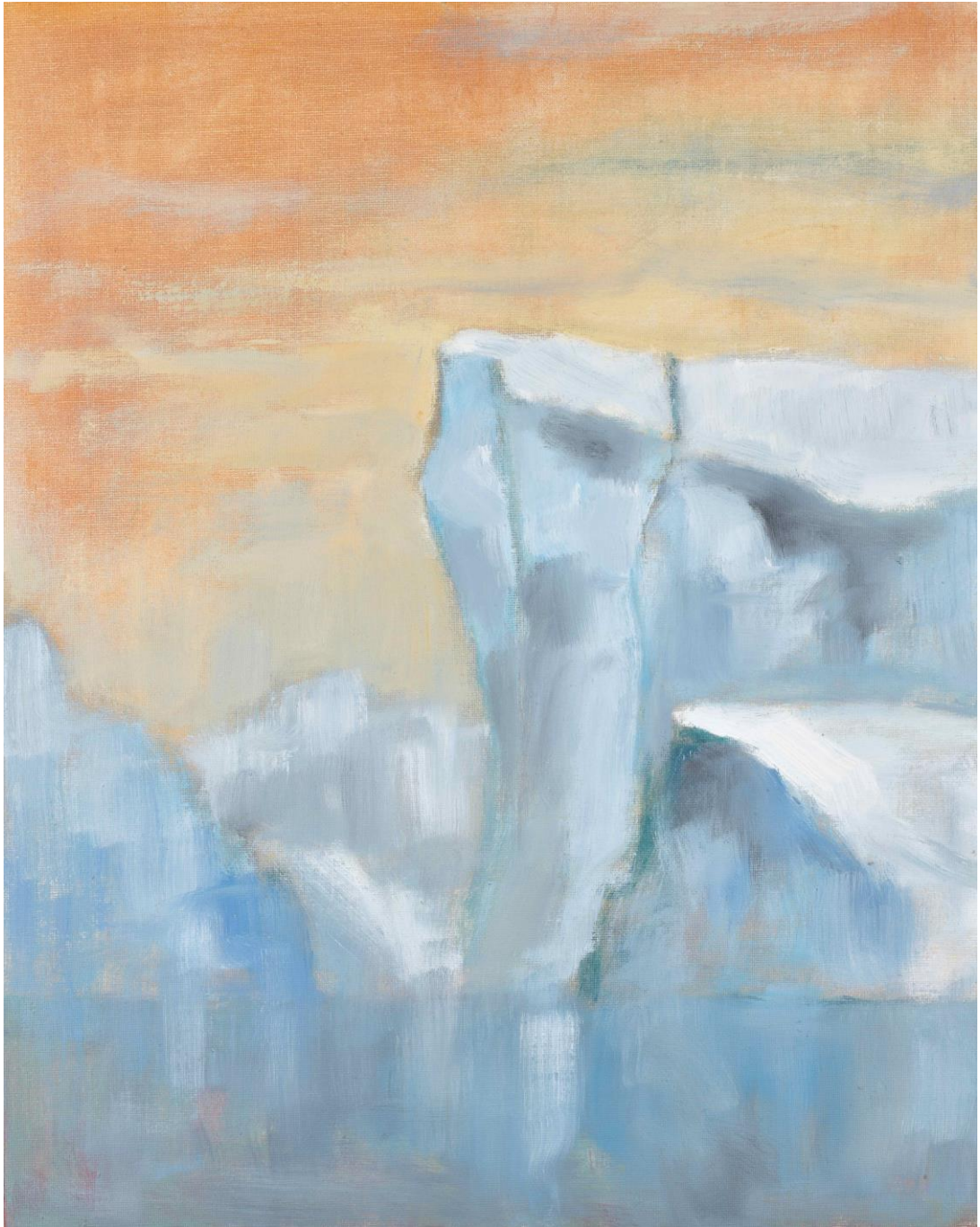
*Polar Reproach I*

After Edward Seago

Oil on board, 51 x 41 cm, £1,800

Prints also available – see inside back cover





*Polar Reproach II*

Oil on board, 51 x 41 cm, £1,800

Prints also available – see inside back cover



## ELEMENTAL: WATER

Water in our seas and rivers is fundamental to life, yet is under threat from innumerable sources. It is always in motion. It can be homely or comforting, as in a small English stream, or all powerful, as in seas and estuaries. These images seek to capture something of its capricious beauty and its interplay with light.



*Gentle Rain*

Mixed media on board, 41x 51 cm, £2,400

Prints also available – see inside back cover



*Devon Stream Bed I*

Mixed media on paper, 25 x 35 cm, £1,400  
Prints also available – see inside back cover





*Devon Stream Bed II*

Mixed media on paper, 25 x 35 cm, £1,400

Prints also available – see inside back cover



*Breaking Wave*

Mixed media on paper, 25 x 35 cm, £1,400  
Prints also available – see inside back cover





*Turbulence*

Mixed media on paper, 25 x 35 cm, £1,400

Prints also available – see inside back cover



## ELEMENTAL: ROCK

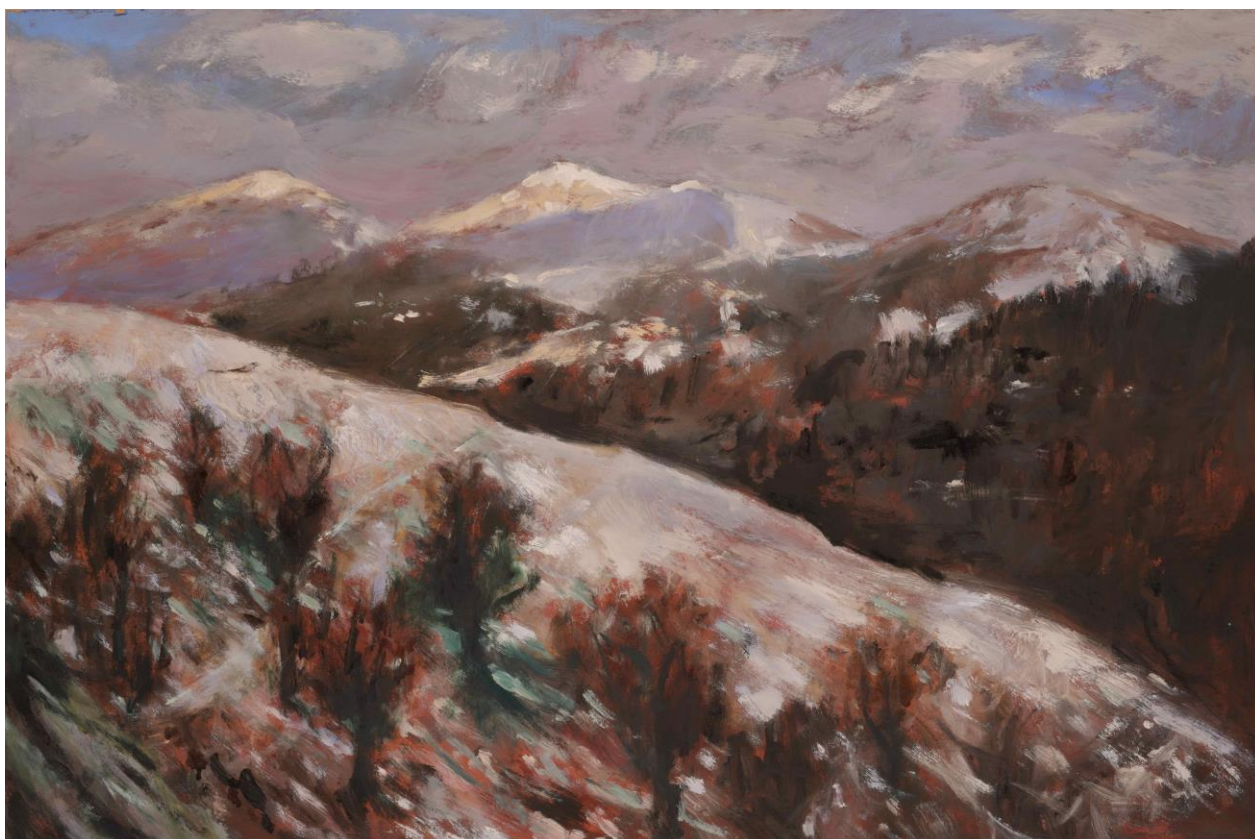
Our earth is shaped by its ancient geology. Mountains are places of awe and mystery. Capturing their essence is a constant challenge. In a couple of these works I have been inspired by and drawn on the work of other artists I admire.



*Tryfan*

After John Piper

Mixed media on paper, 25 x 35 cm, £1,400  
Prints also available – see inside back cover



*Winter in the Malvern Hills*

Oil on board, 51 x 76 cm, £3,300

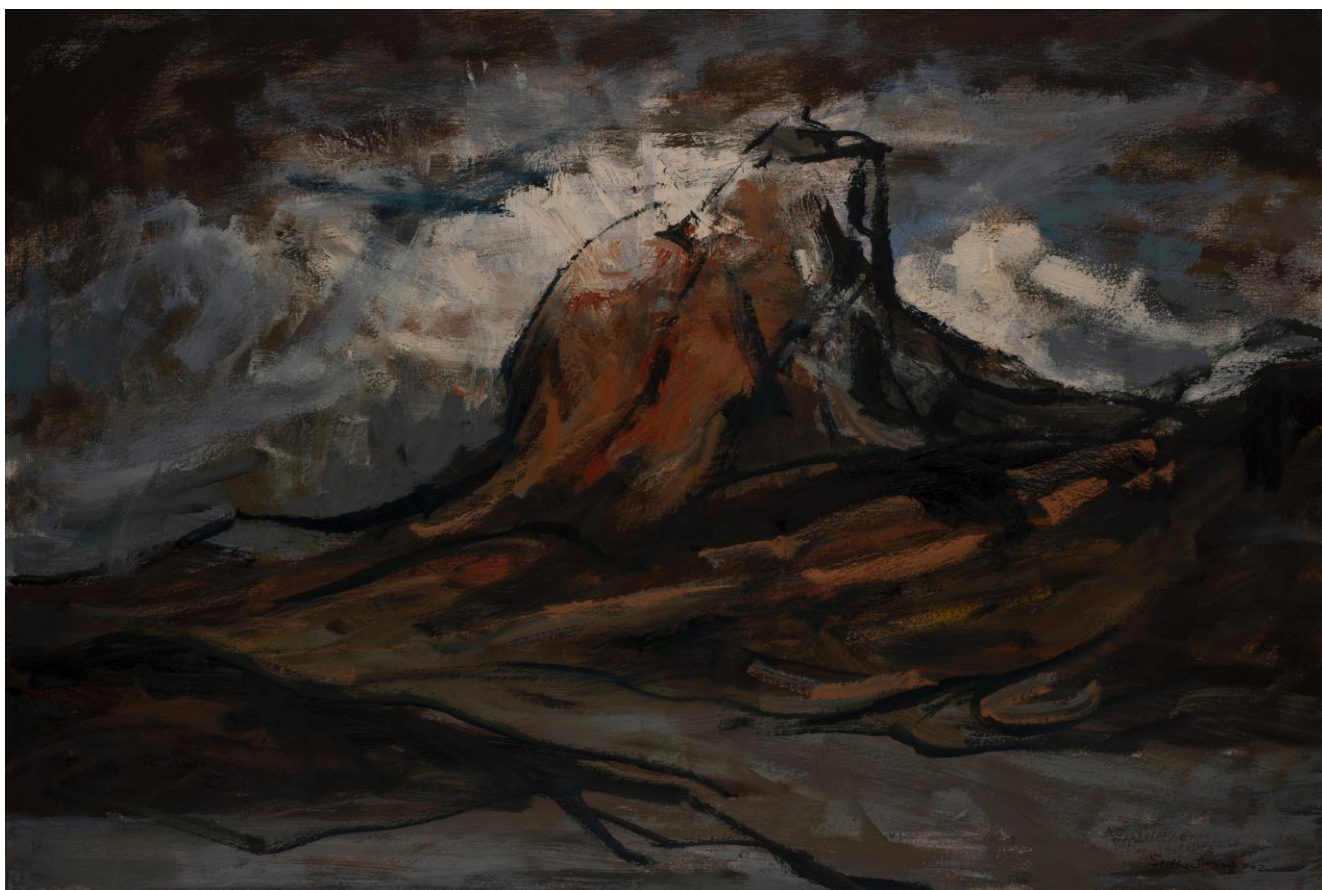
Prints also available – see inside back cover





*The Storr, Winter Face*

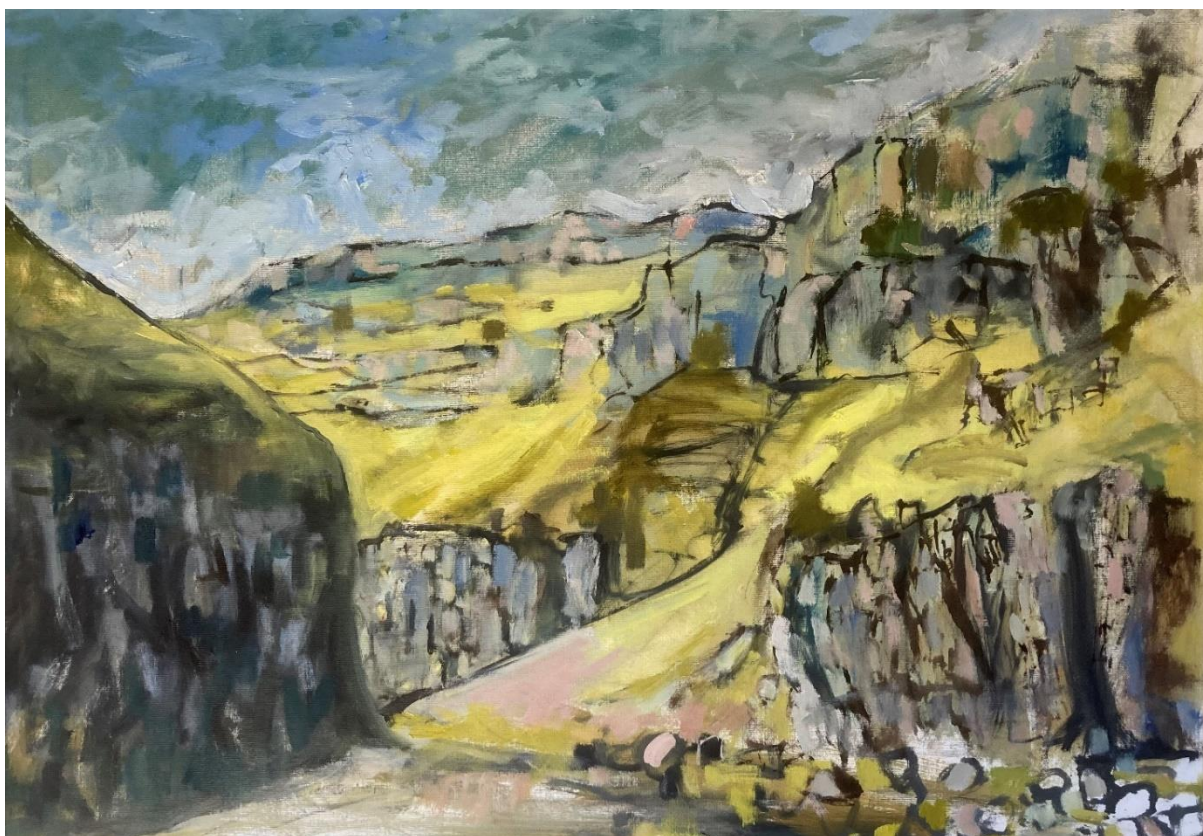
After Fred Schley  
Oil on canvas, £2,400



*Suilven with Cloud*

Oil on canvas, 59 x 89 cm, £3,700





*Looking out from Gordale Scar*

Oil on board, 58 x 83 cm, £3,500



## ELEMENTAL: SEABIRDS

Seabirds are the ultimate synthesis of the animate world and nature. Gannets in particular inspire awe as to their mastery of both the air and water. These paintings seek to capture the energy and drama of their diving.



*Gannets Diving I*

Mixed media on paper, 25 x 35 cm, £1,400

Prints also available – see inside back cover



*Gannets Diving II*

Oil on board, 41 x 51 cm, £2,600

Prints also available – see inside back cover





*Gannets Diving, Bass Rock*

Oil on board, 50 x 39 cm, £2,600

Prints also available – see inside back cover



## ELEMENTAL: WILD PLACES AND REWILDING

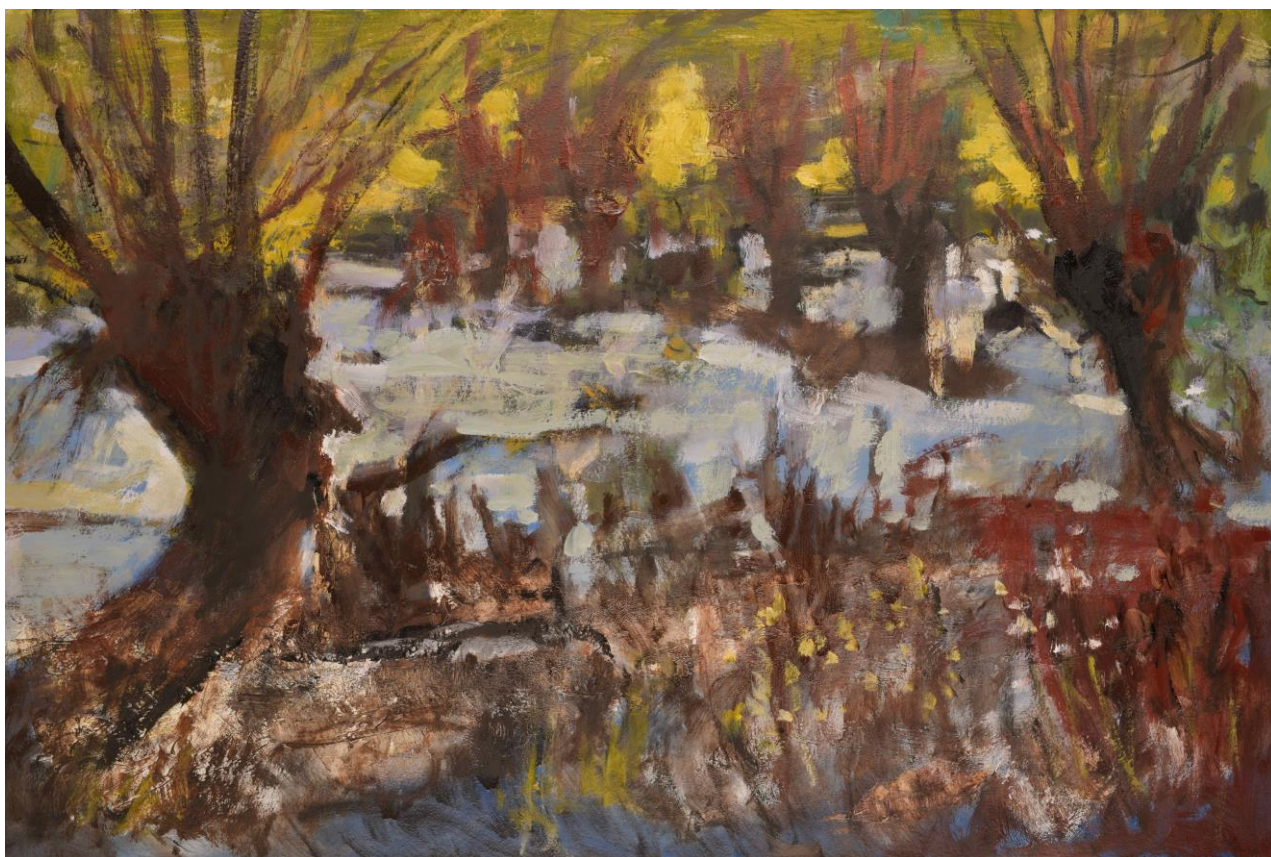
It is heartening to see that nature can – at least in places – be restored and rewilded. I have been inspired over the years to see the resumption of fen land in the Great Fen project, a vast fenland landscape between Peterborough and Huntingdon, which can be experienced for example at the National Trust Wicken Fen nature reserve, north of Cambridge. As GM Hopkins says in his poem *Inversnaid*, “Long live the weeds and the wilderness yet.”



*Impression: Winter Sun in the Fens*

Oil on board, 51 x 61 cm, £3,200

Prints also available – see inside back cover



*The Great Fen: Long Live the Weeds and the Wilderness*

Oil on board, 51 x 76 cm, £3,400

Prints also available – see inside back cover



## SOCIAL COMMENT

These pictures I think speak for themselves as offering some comment on the period of transition we face, from blissful innocence as to the causes and implications of climate change through to recognition, and either action, apathy, or evasion.



*The Death of Oil?*

Oil on board, 51 x 76 cm, £3,400

Prints also available – see inside back cover



*The Age of Innocence, 1957*

Oil on board, 51 x 61 cm, £3,200

Prints also available – see inside back cover





*Sixty Years of Climate Apathy*

Oil on canvas, 49 x 70 cm, £3,400

Prints also available – see inside back cover



Martin Polden, OBE

Co-founder of ELF

June 23, 1928 - April 5, 2023